




**cahill**  
FABRICATION



Building beyond.



# Cahill Fabrication, a division of the Cahill Group, specializes in piping, structural steel, HVAC, and assembly services.

We offer multiple facilities and a diverse range of solutions for industrial, institutional, and commercial markets, including complex subsea structures, exotic pipe, and industrial HVAC duct.

## Capabilities

With a breadth of fabrication services and an integrated approach to planning and execution, Cahill Fabrication offers a single source solution for complete projects.

Our fabrication facilities, equipment, safety, and management systems are seamlessly integrated to deliver projects on time, and on budget.



*Cahill Fabrication Structural Facility*

### **EXPERIENCED PEOPLE**

Our technically competent personnel have extensive experience managing challenging fabrication projects. Our project and procurement teams are fully integrated to ensure maximum efficiency. Cahill Fabrication has a highly skilled, stable work force.

### **PROVEN SYSTEMS**

Cahill Fabrication uses proven welding and fabrication techniques designed to plan and execute multiple work scopes for any project, any industry.

Parallel work activities, including fabrication at multiple facilities, allow for greater schedule flexibility, less congestion, and labour efficiencies. Our established management systems ensure that all fabrication activities are performed safely, resulting in a quality product for our clients.

## Facilities

Cahill Fabrication has four facilities located in Atlantic Canada, offering a combined 11,000 m<sup>2</sup> of fabrication space to suit a variety of complex, large-scale projects.

Access to multiple facilities offers a number of valuable benefits, including improved project execution sequence, increased productivity, and reliable delivery times.

### **STRUCTURAL**

With expertise in module fabrication and assembly, our structural facilities are dedicated to steel and aluminum components for commercial, heavy industrial and the offshore.

### **PIPING**

Our piping facilities, designed to simultaneously fabricate exotic and carbon materials, also specialize in pipe spools, process modules, and subsea equipment.

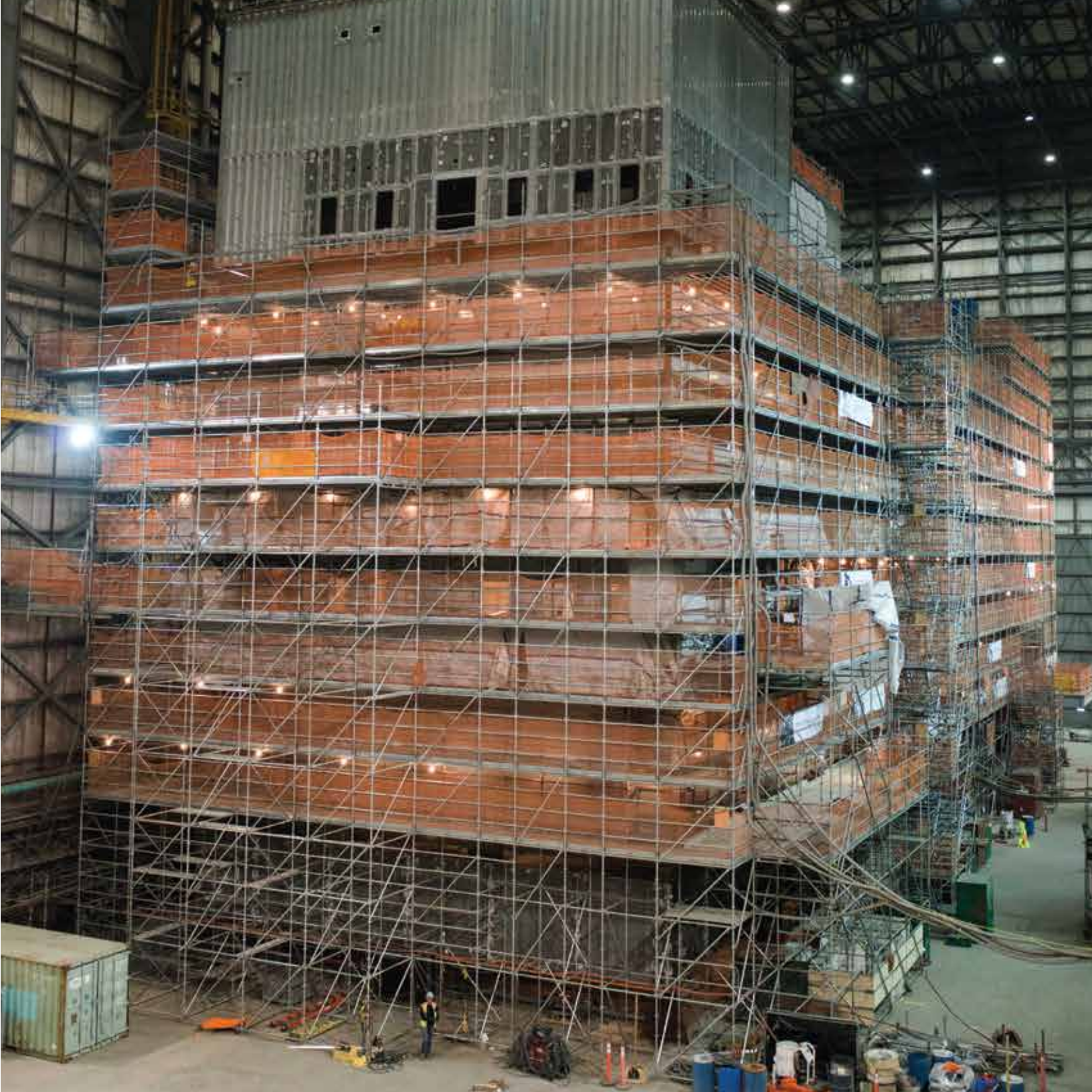
### **HVAC**

Expertise in commercial and industrial ventilation ductwork is supported by advanced equipment that fabricates large volumes cost effectively.

### **Our modern facilities feature:**

- The latest CNC cutting, forming and welding technologies.
- Environmentally sound blast and paint capabilities in a controlled environment.
- Ambient air filtration system.

Cahill Fabrication offers expertise in offshore specialty work including subsea structures and modular builds, an established materials management system, and several transportation options including major highways, ocean, and rail.





*Cahill Fabrication Structural Facility*


## Experience

Cahill Fabrication has provided solutions for major projects including the SeaRose FPSO, Terra Nova FPSO, North Atlantic Refinery, Long Harbour Processing Plant, Voisey's Bay, and the North Amethyst Offshore Development.

We have extensive experience in mechanical completion and commissioning industrial facilities, specialized lifting design, module transportation load out, and sea fastening.


## QHSE

- ISO 9001:2008 registered.
- Canadian Welding Bureau (CWB) certification for steel and aluminum.
- ASME Certification for high-pressure pipe fabrication.
- COR Certification.
- Corporate *Safe Steps* program.
- Environmental and regulatory compliance.
- Certified to meet offshore standards.



Cahill Fabrication is a division of the Cahill Group, one of the largest multi-disciplinary construction companies in Canada. With operations from Eastern Newfoundland to Northern Alberta, Cahill is building the future of oil and gas, mining, hydro, and social infrastructure on some of the largest construction and fabrication project sites in the country. Through strategic partnerships with global industry leaders, progressive thinking, and a passionate, dedicated workforce, we safely deliver best in class solutions to the world.

**Together, we're building beyond.**

A dark, blurry photograph of a car's interior at night. The image is mostly black, with a few faint, out-of-focus light sources. A prominent circular glow is visible in the upper right quadrant, likely from a headlight or a circular light fixture. The overall impression is that of a low-light, high-contrast scene, possibly taken from the driver's perspective or through a window.

[cahill.ca](http://cahill.ca)